

2 Gbps Unlicensed Band Radio ion8xle

5.1 to 5.9 GHz, 2 Gbps UBR with
option for External Antenna



HFCL's 2 Gbps UBR is a meticulously engineered Enterprise/ Carrier Grade P2P Series, purpose-built to cater to the exacting needs of backhaul and high bandwidth-demanding applications. With its exceptional performance and unwavering reliability, this series operates seamlessly across 5 GHz frequency range of 5.1 to 5.9 GHz, ensuring uninterrupted connectivity and outstanding results.

Ease of Installation



Plug-and-Play

The plug-and-play model ensures effortless deployment. Whether redeploying or setting up a new remote site, simply input the IP address, and the radio will automatically fetch the server and intended configuration. This helps in quick and seamless set-up with minimal manual intervention.



LED & Buzzer Support

According to the LED blink pattern and buzzer sound, the rigger can align its position based on signal strength. Wireless experts traveling to the field for site installations may not be necessary, saving field deployment costs.

Adaptive RF Technology

Adaptive RF technology refers to the sophisticated approach that combines Artificial Intelligence (AI) Algorithms with Radio Frequency (RF) systems to optimize wireless communication performance in real time. By leveraging AI, the system can intelligently adapt and adjust various RF parameters to enhance signal quality, coverage, and overall network efficiency.

Automatic Channel Selection (ACS): Immediately switches to the best suitable channel in case of interference.

Dynamic Data Rate Selection (DDRS): Switches to the subsequent possible modulation in case of site-specific interference.

Automatic Transmit Power Control (ATPC): Automatically adjusts Tx power based on the link distance.

Dynamic Channel Selection (DCS): Changes channels when there is high interference without any downtime.



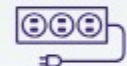
IP67 Certified



Supports wind load
up to 180 kmph



Sustains in challenging
weather conditions and
extreme temperature
(-40° C to 55° C)



Indoor/Outdoor PoE to
support 4kV surge
protection and enhanced
6kV using external SPD
(Surge Protection Device)

Advanced Technology Support



Dying Gasp

Proactively monitors customer-end power outages, leading to automatic closure of customer-end tickets.



GPS

A GPS-enabled system enables planning from a central location to check feasibility & new installation.



Temperature Sensor

Proactive monitoring of the radio temperature and threshold-based alert feature helps protect data and equipment within the radio.

Security

The Radio supports AES-256 to provide a robust encryption format in wireless media, evading unwanted threats in the wireless communication ecosystem.

Wireless MAC Access
Level Control

SSID lock with WPA2/3
Support

P2P Link

Connects two locations together through line of sight (LOS).

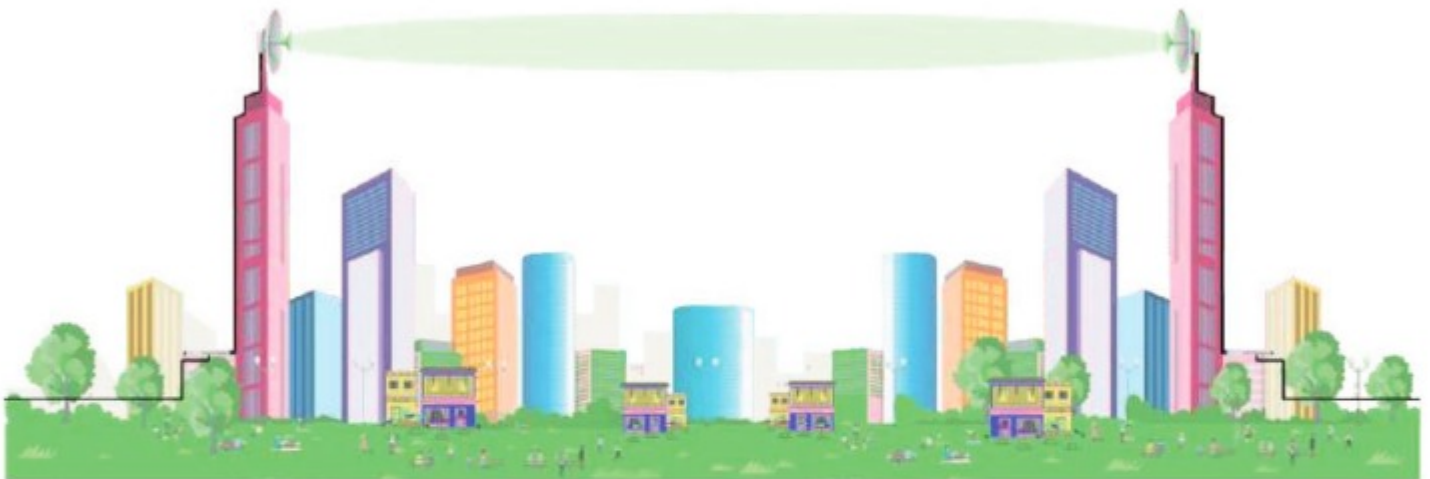
Rich Feature Set

Software designed to meet all types of customer requirements.

- Supports both IPv4 & IPv6 addressing
- Supports jumbo frame size up to 9000 MTU
- Supports timer for tracking Ethernet Inactivity
- Supports 4 Level Priority quality of service (QoS) as per IEEE 802.1e WMM
 - Voice • Video • Best Effort • Background
- Enterprise VLAN features such as Q-in-Q, Access, Trunk, Transparent, and management VLAN
- Flexi channel Bonding allows to make combinations with 20/40/80 channel bandwidths
- ARP and Bridge table allows to view the data and it comes with the option to clear and or refresh
- Supports Network Time Protocol (NTP) Client Application for synchronizing the clock to the network time server

P2P Scheduler

- Effective wireless algorithm to deliver up to 2 Gbps aggregate throughput
- Better latency and jitter value to provide an excellent customer service experience
- UL/DL Configuration based control for deploying P2P links



ion8xle

5.1 to 5.9 GHz 2 Gbps UBR with External Antenna



Wireless

Access Technology	OFDMA
Radio Mode	5.1 to 5.9 GHz
Radio Frequency Band	5.1 to 5.9 GHz (Country specific restrictions apply)
Peak throughput	Up to 2 Gbps aggregate UL/DL throughput
Max Transmit Power	5 GHz: 24 dBm Tx power values will depend on country-specific guidelines
Channel Size	20/40/80 MHz
Modulation Schemes	Supports upto 1024 QAM
Processor	Qualcomm chipset
Channel Bonding Support	20+20, 20+40, 20+80, 40+40, 40+80, 80+80 MHz
Power	IEEE 802.3at 48V
Max Power Consumption	<23 W
Interface	1 X 10/100/1000/2500BASE-T Ethernet
Antenna	N-connector option for external antenna
Receiver Sensitivity MCS 0	-84 dBm @ 80 MHz -87 dBm @ 40 MHz -90 dBm @ 20 MHz

Certifications

Certifications	<ul style="list-style-type: none">• CE• FCC Part 15B and 15E [Class A]• MTCTE• RoHS 3.0• WPC ETA
-----------------------	--

Security Features

Security	WPA, WPA2, WPA3 - Personal and Enterprise and 256-bit AES PSK with hardware acceleration
High Level Features	<p>WAN Protocols: Static IPv4/v6, DHCP client v4/v6</p> <p>Management: Standalone (via GUI) or through appliance-based EMS or cloud-based</p> <p>Smart Spectrum Management: Active scan; monitors/logs ongoing RF interference across channels (no service impact); Dynamic auto optimization of channel, Adjustable upstream/downstream bandwidth ratio</p> <p>QoS: DSCP priority and VLAN priority based on 802.11e WMM</p> <p>IGMP snooping¹</p> <p>TACACS +¹</p> <p>Two-Way Active Measurement Protocol (TWAMP): Enables measurement of round-trip network performance of links</p> <p>In-built temperature sensor*</p> <p>In-built buzzer*</p> <p>Dying Gasp feature support*</p> <p>GPS Location: GPS + GLONASS + IRNSS Support*</p>

Physical and Environmental

Dimensions	263 x 175 x 70mm	Operating Humidity	5 to 95% (non-condensing)
Weight	0.3 kg	Operating Altitude	As per QM333 (3050 meter/10000 feet)
Mounting	Pole mounting Weight: 1.6 kg	Wind Sustainability	180 km/hour (sustained winds)
Visual Indicators	Link, Alarm, & Power LEDs	Certifications	FCC Class A, CE, MTCTE, RoHS 3.0, ETA
Operating Temperature	-40° C to 55° C	Outdoor Ingress Protection Rating	IP67

Safety & Other Compliances

- Safety standard as per IEC/EN 62368 IEC60950
- Electrostatic Discharge Immunity as per IEC 61000-4-2, Contact Level 2 and Air Discharge Level 3
- DC Surge Immunity as per IEC 61000-4-5, Level 2 (power port + signal port)
- Electrical Fast Transient/Burst Immunity as per IEC 61000-4-4, Level 2
- Radiated susceptibility as per IEC 61000-4-3 Level 2
- Conducted Susceptibility as per IEC 61000-4-6, Level2
- Bump and vibration as per QM333
- Radiated Emission as per CISPR 32 Class A
- Conducted Emission as per CISPR 32 Class A (power port+signal port)
- Voltage Variation: AC- as per IEC 61000-4-11 and DC- as per IEC 61000-4-29
- Health Test as per IEC/EN62311

Ordering Information

Model No.	Description
ion8xle	IO 5 GHz 2 Gbps UBR with External Antenna

* Note : Customizable hardware options are available. Please reach out to Sales Team for more information

¹In Roadmap – Future Software Upgrade

Disclaimer: HFCL, IO by HFCL, and their respective logos are trademarks and/or registered trademarks of HFCL Limited. HFCL Limited assumes no responsibility for any inaccuracies in this document and reserves the right to revise or transfer this document without notice. All other trademarks, service marks, registered marks, or registered service marks mentioned herein are the property of their respective owners.

Last Updated October 3, 2024



Suite 2101, Bahrain Financial Tower (West Tower)
P.O. Box 2591, Kingdom of Bahrain

☎ 17565171 📧 17565171 ✉ enquiries@northstar-telecom.net

www.northstar-telecom.net